

visit the chapter website at [www.fes-calusa.org](http://www.fes-calusa.org)

### EXECUTIVE BOARD OF DIRECTORS

#### President

John English, PE  
(239)649-4040 – Fax (239)643-5716  
[johnenglish@wilsonmiller.com](mailto:johnenglish@wilsonmiller.com)

#### Vice President

David Romano, PE  
(239)985-1200 – Fax (239)985-1258  
[davidromano@holemontes.com](mailto:davidromano@holemontes.com)

#### Secretary

Patrick Jennings, PE  
(239)992-0711 – Fax (239)992-9223  
[pjennings@bsu.us](mailto:pjennings@bsu.us)

#### Treasurer

Adolfo Gonzalez, PE  
(239)649-4040 – Fax (239)263-6446  
[adolfogonzalez@wilsonmiller.com](mailto:adolfogonzalez@wilsonmiller.com)

#### Past President/Membership

Walter Gilcher, PE  
(239)985-1200 – Fax (239)985-1258  
[waltgilcher@holemontes.com](mailto:waltgilcher@holemontes.com)

#### State Director

Carl Barraco, PE  
(239)461-3170 – Fax (239)461-3169  
[carl@barraco.net](mailto:carl@barraco.net)



### SAVE THAT DATE!

ITE/ APWA/FES Joint  
Holiday Gathering  
**Thursday, Dec. 3<sup>rd</sup>**

Pelican's Preserve  
6:00 PM

*(Look inside for more details.)*

### President's Message

**John English, PE**

President - Calusa Chapter

It appears that everyone has fully recovered from the golf tournament. The holidays are fast approaching. That means that the **ITE/ APWA/FES joint holiday gathering** is coming up. The date for this year's gathering is **Friday December 3rd**. The gathering will be held at **Pelican's Preserve on Colonial Boulevard in Fort Myers**. There will be a great dinner followed by music and dancing. If there is anything more entertaining than watching engineers on the dance floor, I don't know what it is.

I would like to extend my thanks to those of you who attended our November Dinner Meeting, to hear **Michael Bridges, CPM, FPEM, Deputy Director of the Division of Public Safety for Lee County**. Michael's presentation on the devastation that Lee County recently experienced with Hurricane Charley, the lessons learned, and what will be done to prepare for future hurricanes was very well done and informative. **Thanks to your support we are also able to send \$200 to the FES Hurricane Relief effort.**

This year our chapter is meeting all of its fund raising goals. The golf tournament was a huge success, and will once again help us meet our goal of giving scholarships to local students to pursue and education in engineering. Our next big event is the **Mathcounts Competition**. This competition helps promote math with our local middle school and high school students, in hopes that would encourage the participants to pursue a degree in engineering. With the increasing demands in this area for engineers, this is now more important than ever. Organizational efforts are just now beginning in preparation for the event on **February 12, 2005**. This competition has grown tremendously in size. Many volunteers are needed to help make our local Mathcounts competition happen. If you are interested in taking an active role in helping prepare for the event, or if you are simply interested in volunteering on the day of the competition, please contact me, or our **Mathcounts Co-Chairs Elizabeth Fountain, PE or Rebecca King, EI**. I am sure they would appreciate all the help they can get.

As I state in every President's message, the dinner meetings are critical to the success and growth of our chapter. It was encouraging to see some new faces at last month's meeting. I encourage those of you who do not attend regularly, or have not been in a while, to come to the holiday gathering, to socialize with your fellow engineers. The holiday gathering promises to be a great time. Please contact **Nicole Maxey, PE, with Lee County, or David Romano, PE, FES Vice President** to make your reservations today.

Thank you and I look forward to seeing you at the holiday gathering.

John English, PE  
President – Calusa Chapter



florida  
engineering  
society

Calusa Chapter Newsletter

December 2004



# Annual Holiday Gathering

Please join us  
for a night of food, music and fun at  
our Annual Holiday Gathering

Friday, December 3, 2004

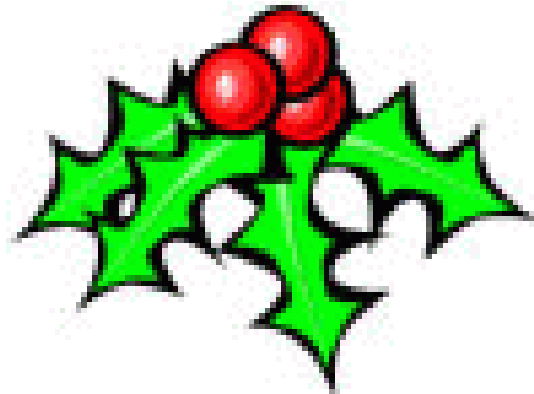
Social Hour 6:30 pm  
Dinner 7:30 pm  
Followed by Music and Dancing

Pelican Preserve  
Colonial Boulevard (Exit 136) east of Interstate 75

Spouses and Guests Welcome  
\$20.00 per person

RSVP to Nicole Maxey  
at 479-8569  
or [maxeync@leegov.com](mailto:maxeync@leegov.com)

Sponsored by the local chapters of the  
American Public Works Association,  
Florida Engineering Society and  
Institute of Transportation Engineers





## UPCOMING ACTIVITIES CALENDAR

November 11 <sup>th</sup>	<b>Calusa Chapter Dinner Meeting</b> The Clubhouse at the Strand
December 3 <sup>rd</sup>	<b>APWA / FES Joint Holiday Gathering</b> Pelican Preserve - Fort Myers
February 12 <sup>th</sup>	<b>Mathcounts Calusa Chapter Competition</b> Florida Gulf Coast University
February 17 <sup>th</sup>	<b>Engineer's Week Banquet – Speaker Trudi Williams</b> The Clubhouse at the Strand
March TBD	<b>March Dinner Meeting</b> Panther Island Mitigation Bank
April TBD	<b>April meeting</b> Family Bowling Outing - TBD
May TBD	<b>May meeting</b> Possible FPL Site Visit - TBD
June TBD	<b>Installation of New Officers – FES President Mark L. Mongeau, PE</b> The Clubhouse at the Strand

Members are encouraged to contact **David Romano, PE** at (239) 985-1200 or email:  
[davidromano@holemontes.com](mailto:davidromano@holemontes.com) to request additional information or to suggest a future program or event.



## BUSINESS CARD SPONSORSHIP

If you haven't done so already, please add your business card to our newsletter sponsorships for the remainder of the year. For further information regarding adding your business card to our newsletter, please contact **David Romano, PE** or **Patrick Jennings, PE**. Your sponsorship helps defray the cost of newsletter production and mailing.



## **MEMBERSHIP NEWS**

### **Are you getting back for giving back to FES?**

This year reward yourself with FREE incentive prizes from FES. Each time you give back to FES through a new member sponsorship, you will receive a prize. Prizes vary from FES Bucks (to use like cash at FES events), to free membership dues at the state and national level, to a top prize of a two night stay at the Marco Island Marriott. A complete list of membership incentive prizes is available at [www.fleng.org](http://www.fleng.org) along with FES membership application. For additional information about sponsoring new members, contact Kate Robinson, Director of Membership Recruitment at 850-224-7121 or [krobinson@fleng.org](mailto:krobinson@fleng.org).

## **CONTINUING EDUCATION NEWS**

### **Continuing Education Made Easy**

Did you know you can meet your 8 hours of continuing education credit from the convenience of your home or office? FES offers on-line and correspondence courses to help ease the renewal process. Courses available on-line and through correspondence include the laws and rules and project management. The laws and rules course meets the 4 hours of laws and rules credit. The project management course meets the 4 hours of technical credit needed to renew your licensure. Courses are offered at the low rate of \$99 each for members. Take advantage of this offer today. The FBPE renewal deadline is February 28, 2005. Register for seminars at [www.fleng.org](http://www.fleng.org).

## **CALENDAR OF EVENTS**

(For additional information about the events listed below, contact the chapter officers or FES Headquarters at 850-224-7121.)

### **December 2004**

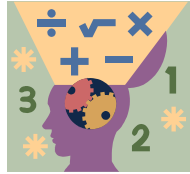
- 2-3<sup>rd</sup> Stormwater Management: A Designer's Course, Orlando Marriott, Lake Mary
- 2-3<sup>rd</sup> FES/FICE Leadership Institute – Session 1, Grand Hyatt, Tampa
- 24<sup>th</sup> FES Headquarters Office Closed for Christmas Holiday
- 31<sup>st</sup> FES Headquarters Office Closed for New Year Holiday

### **January 2005**

- 6-9<sup>th</sup> FES/FICE Leadership Institute – Session 2, Orlando Marriott, Lake Mary
- 19<sup>th</sup> FES Executive Committee Meeting, PBS&J Office, Orlando
- 20<sup>th</sup> Better Project Management Performance, Hilton Orlando, Altamonte Springs
- 21<sup>st</sup> Professionalism, Ethics, & the Law, Hilton Orlando, Altamonte Springs
- 24-25<sup>th</sup> Stormwater Management: A Designer's Course, 2<sup>nd</sup> Edition, Wyndham Westshore, Tampa

### **February 2005**

- 10-12<sup>th</sup> FES/FICE Leadership Institute – Session 3, Adams Mark Jacksonville
- 17<sup>th</sup> Better Project Management Performance, Don Shula's Hotel, Miami Lakes, FL



## MATHCOUNTS

After coming from a record year, MathCounts is quickly becoming a major event for the Calusa Chapter. This year FGCU is providing a ballroom for the contestants rather than individual rooms. The event is scheduled for February 12<sup>th</sup> and promises to be better than ever. The only reason this event won't be the best in the state is if we don't get volunteers to help. Please mark your calendars and contact **Mathcounts Co-Chairs Elizabeth Fountain, PE or Rebecca King, EI.** to sign up NOW.

**Don't forget in order to renew your PE license, Professional Engineers in Florida must earn a total of 8 PDH's during each renewal cycle. The current renewal cycle ends February 28, 2005. Here are the requirements:**

- 4 PDHs of continuing education credit are required in each of two categories.
1. The Laws and Rules that govern the practice of engineering in Florida.  
61G15 – Florida Administrative Code Chapter 471 of the Florida Statutes
  2. Area(s) of Technical Practice

**What is a PDH?** 1 PDH = 50 minutes in the classroom.



## DIRECTORS & COMMITTEE CHAIRS (Contact Us To Volunteer)

<u>How to Contact Us</u>	<u>Phone</u>	<u>FAX</u>	<u>E-Mail</u>
<b>Director - Professional Development</b> Elizabeth Fountain, PE	(239)939-1020	(239)939-7479	<a href="mailto:ElizabethFountain@wilsonmiller.com">ElizabethFountain@wilsonmiller.com</a>
<b>Director - Public Relations</b> Laurie Swanson, PE	(239)649-1509	(239)649-7056	<a href="mailto:las@consult-rwa.com">las@consult-rwa.com</a>
<b>Director - Ways and Means</b> Dan Waters, PE	(239)649-4040	(239)643-5716	<a href="mailto:danielwaters@wilsonmiller.com">danielwaters@wilsonmiller.com</a>
<b>Awards Committee</b> Walt Gilcher, PE	(239)985-1200	(239)985-1258	<a href="mailto:waltgilcher@holemontes.com">waltgilcher@holemontes.com</a>
<b>MathCOUNTS Committee</b> Elizabeth Fountain, PE (co-chair) Rebecca King, EI.	(239)768-6600	(239)939-7479	<a href="mailto:ElizabethFountain@wilsonmiller.com">ElizabethFountain@wilsonmiller.com</a>
<b>Scholarship Committee</b> Tommy Perry, PE	(863)983-9188	(863)983-9854	<a href="mailto:tperry@johnsonprewitt.com">tperry@johnsonprewitt.com</a>