

visit the chapter website at [www.fes-calusa.org](http://www.fes-calusa.org)

### EXECUTIVE BOARD OF DIRECTORS

#### President

John English, PE  
(239)649-4040 – Fax (239)643-5716  
[johnenglish@wilsonmiller.com](mailto:johnenglish@wilsonmiller.com)

#### Vice President

David Romano, PE  
(239)985-1200 – Fax (239)985-1258  
[davidromano@holemontes.com](mailto:davidromano@holemontes.com)

#### Secretary

Patrick Jennings, PE  
(239)992-0711 – Fax (239)992-9223  
[pjennings@bsu.us](mailto:pjennings@bsu.us)

#### Treasurer

Adolfo Gonzalez, PE  
(239)649-4040 – Fax (239)263-6446  
[adolfogonzalez@wilsonmiller.com](mailto:adolfogonzalez@wilsonmiller.com)

#### Past President/Membership

Walter Gilcher, PE  
(239)985-1200 – Fax (239)985-1258  
[waltgilcher@holemontes.com](mailto:waltgilcher@holemontes.com)

#### State Director

Carl Barraco, PE  
(239)461-3170 – Fax (239)461-3169  
[carl@barraco.net](mailto:carl@barraco.net)

#### Regional Vice President

Kevin Higginson, PE  
(239)221-2932 – Fax (239)221-2400  
[khigginson@jpcfl.com](mailto:khigginson@jpcfl.com)



### SAVE THAT DATE!

Calusa Chapter  
Dinner Meeting

**Thursday, Sept. 30<sup>th</sup>**  
Fiddlesticks Country Club  
6:00 PM  
(Look inside for more details.)

### President's Message

**John English, PE**

President - Calusa Chapter

I would be remiss to not mention the devastation to our region left behind by Hurricane Charley. This hurricane certainly put things into clearer perspective for me, in regards to why we prepare our engineering designs to such high standards, and the unyielding obligation we as professional engineers have to the public. It is easy to see how one could be lulled into a false sense of security through years of calm environmental conditions. It became clear in the days after, how important it is to design community infrastructure with safety factors, such that neighborhoods won't flood, that building structures might have a chance to stay intact, and that potable water supply and electrical service would be protected or easily and quickly repaired.

Many individuals and companies in our area have donated goods or volunteered services to assist those in the areas most devastated by Hurricane Charley. At our August Calusa Chapter Board of Directors meeting, we discussed how our local chapter could also help out. The Board voted to donate some of the monies collected at our next Dinner Meeting to one of the local emergency assistance groups. With that in mind, please join us on **September 11th at Fiddlesticks Country Club for our September Dinner Meeting**, to hear Lee County **Commissioner Andy Coy** give his insights into where growth and development is headed in Lee County. Please contact **David Romano, PE**, to make your reservations today.

I had the opportunity to attend the FES Annual Conference last month in West Palm Beach. I would like to highlight a couple of items from that meeting. The first is that the FES State Board of Directors recognized **Kevin Higginson, PE** for his years of service to the organization, culminating with his term as Regional Vice President. The second is the overwhelming positive response from the first graduating class of the FES/FICE Leadership Institute. All the graduates that I spoke to highly recommended this program as a great and worthwhile opportunity to improve your skill set as a leader in engineering. If you are interested in learning more about this program, please contact me for more information.

Again, I would like to lift up our **18th Annual Scholarship Golf Tournament** to your attention. The Golf Tournament is extremely important to our organization because it is the largest fund raising event for the scholarships the Chapter issues at the end of the year. This year's tournament will be held on **October 16th at Stonebridge Country Club** in north Naples. This tournament is our chance to get out and have fun, and to raise enough money to make a real impact on the lives and educations several of our local youth. Our goal is to raise at least \$6,000 to award to our engineering scholarship recipients next year. Use the tournament registration form in this newsletter. Contact **Dan Waters, PE** at (239) 649-4040 for sponsorship information, to sign up a team, or to volunteer to help on the day of the tournament.

Thank you and I look forward to seeing you at one of our upcoming events.

John English, PE  
President – Calusa Chapter



## EIGHTEENTH ANNUAL SCHOLARSHIP SCRAMBLE GOLF TOURNAMENT OCTOBER 16, 2004

Each \$65 entry fee includes greens fees, cart, driving range, continental breakfast and lunch, drinks, raffle prizes, trophies and a coupon for a free greens fee for a future round at Stonebridge. Great advertising opportunities exist through sponsorships. Professionally created signs with company names displayed on tees for \$150 each.

**Raffle Prizes will include:**

- Golf Clubs
- Golf Bags, balls and accessories
- Gift Certificates
- Clothing and much more



Contact Dan Waters at WilsonMiller at (239) 649-4040 for more information or [DanielWaters@WilsonMiller.com](mailto:DanielWaters@WilsonMiller.com).

**Tournament format:**

The tournament will couple a best-ball scramble with a weighted team handicap system. When filling out the registration form, please indicate each player's average score on a regulation 18-hole – par 72 golf course. These scores will be used in determining each team's handicap factor. This format will ensure that each team has an opportunity to win the tournament. Please note that a four-person team is not required to sign up and play.

Name (contact person) \_\_\_\_\_

Company & Address \_\_\_\_\_

**This check is for the following player/participation:**

\_\_\_\_\_ Total players @ \$65      Total    \$ \_\_\_\_\_

\_\_\_\_\_ Hole sponsor @ \$150      Total    \$ \_\_\_\_\_

**TOTAL \$ \_\_\_\_\_**

**Players**

Name \_\_\_\_\_ Avg. score \_\_\_\_\_

Name \_\_\_\_\_ Avg. score \_\_\_\_\_

Name \_\_\_\_\_ Avg. score \_\_\_\_\_

Name \_\_\_\_\_ Avg. score \_\_\_\_\_

**STONEBRIDGE GOLF & COUNTRY CLUB  
2100 Winding Oaks Way, Naples, Florida**

**Registration Deadline:  
October 8th, 2004**

Registration and range at 7:30 a.m.  
Shotgun start at 8:30 a.m. Raffle  
and Award ceremony will be  
conducted during lunch immediately  
after the conclusion of the play.



**Mail check (Payable to FES) and  
registration form to:**

Dan Waters  
WilsonMiller, Inc.  
3200 Bailey Lane,  
Suite 200  
Naples, FL 34105



## September Calusa Chapter Dinner Meeting

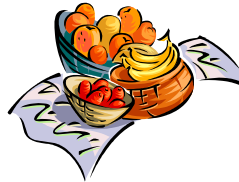
### Speaker

Lee County Commissioner Andy Coy

**Thursday, September 30th, 2004**

Fiddlesticks Country Club (I-75, Exit 131)

Social Hour at 6:00PM – Dinner at 7:00PM  
Program Immediately Following Dinner



As Always, Spouses and Guests are Welcome!

\$30.00 per person (\$5.00 donated to Hurricane Charlie Relief Efforts)

Call (985-1200), fax (985-1258) or email your RSVP to **David Romano, PE** by 12 noon on September 29<sup>th</sup> ([davidromano@holemontes.com](mailto:davidromano@holemontes.com)).

\_\_\_\_\_ YES, I will be attending.  
(Name)

\_\_\_\_\_ Spouse/Guest  
(Name)

*Meatless meals are available upon request.*



### BUSINESS CARD SPONSORSHIP

If you haven't done so already, please add your business card to our newsletter sponsorships for the remainder of the year. For further information regarding adding your business card to our newsletter, please contact **David Romano, PE** or **Patrick Jennings, PE**. Your sponsorship helps defray the cost of newsletter production and mailing.



## UPCOMING ACTIVITIES CALENDAR

- Sept. 13 – 15<sup>th</sup>**      **Advanced Maintenance of Traffic\***  
Radisson University Hotel, Orlando
- Sept. 21<sup>st</sup>**            **FICE/FDOT Financial Manager's Workshop\***  
Tampa
- Sept. 24<sup>th</sup>**            **Concrete Stormwater Solutions Part 1**  
Ramada Riverfront 2500 Edwards Dr. Fort Myers, FL
- Sept. 27 – 28<sup>th</sup>**      **Stormwater Management\***  
(tentative)            Orlando Marriott, Lake Mary
- Sept. 30<sup>th</sup>**            **Calusa Chapter Dinner Meeting**  
Fiddlesticks Country Club
- October 8<sup>th</sup>**            **REGISTRATION DEADLINE**  
**18<sup>th</sup> Annual Scholarship Scramble Golf Tournament**
- October 16<sup>th</sup>**        **18<sup>th</sup> Annual Scholarship Scramble Golf Tournament**  
Stonebridge Golf & Country Club
- February 12<sup>th</sup>**      **Mathcounts Calusa Chapter Competition**  
Florida Gulf Coast University

*\* For additional information on these events, visit [www.fleng.org](http://www.fleng.org)  
or contact FES Headquarters at (850)224-7121.*

Members are encouraged to contact **David Romano, PE** at (239) 985-1200 or email:  
[davidromano@holemontes.com](mailto:davidromano@holemontes.com) to request additional information  
or to suggest a future program or event.



## Concrete Stormwater Solutions Part 1

4 Professional Development Hours

Seminar Presented by: The Florida Concrete Pipe Institute (FCPI), CEP 00153 (Areas of Practice)

**Friday, September 24, 2004**

Ramada Riverfront, 2500 Edwards Dr., Fort Myers, FL

7:30 am to 1:00 pm (7:30 am registration & continental breakfast)

**\$40 per person** includes Continental Breakfast, Lunch, Seminar and Beneficial Design Aids - ACPA Design Manual (with CD), ACPA Design Data 40, ACPA Fill Height Tables, and ACPA PipePac software including 3eb, CAPE, and LCA programs. Pre-registration and payment is recommended. Seating is limited to the first 75 registered attendees.

### Who should attend?

**Civil Engineers and Designers from both  
Public and Private Sectors.**

This seminar will enable you to:

Understand indirect design for reinforced concrete pipe using ACPA DD 40, Design Manual, and PipePac software.

Perform sample calculations by hand, D-Load tables, and computer assisted software.

Comprehend precast box culvert design, state specifications, and national specifications.

Realize potential applications, installation factors, live load ramifications, and hydraulic considerations for box culverts.

Recognize installation requirements for reinforced concrete pipe using the standard installations.

Appreciate the benefits of the standard installations compared with the historical B, C, and D beddings; and recognize costs associated with the pipe envelope using CAPE software.

Know the FDOT requirements for videotaping stormwater pipes.

Grasp what is important to look for in a videotape in terms of joint gap, misalignment, deflection, buckling, and cracking.

Speakers:

Doug Holdener, P.E. – Regional Engineer, Rinker Materials Hydro Conduit. Doug is a graduate of Texas A&M University with a M.S. degree in Civil Engineering. He has 8 years experience working as a design consultant and stormwater engineer.

Steve Hiner, P.E. – Corporate Engineer, Rinker Materials Hydro Conduit. Steve is a 1976 graduate of the Virginia Military Institute with a B.S. degree in Civil Engineering and has more than 25 years experience in reinforced concrete pipe and precast box culvert design. He is widely respected within industry as an expert in the field. Steve also is active with specification efforts in AASHTO and ASTM. He is based out of Houston, Texas.

Ed McCloskey – Marketing & Promotion Representative, Hanson Pipe & Products Southeast Region, and Marketing Director for the Florida Concrete Pipe Institute. Ed's experience in stormwater pipe installation began with Joelson Concrete Pipe Co. 19 years ago.

Dave Baker – President, Ultra Vision Pipeline Services. Dave is President of the Underground Utility and Leak Locators Association and active with the National Association of Sewer Services Company and National Utility Locating Contractors.

Seminar is limited to the first 75 registrants! Register now by calling Mrs. Lauren Annen (407) 895-9333 or email ([lannen@fcpa.org](mailto:lannen@fcpa.org)). Checks should be made out to Florida Concrete Pipe Institute and mailed to: FC#PA, Attention Mrs. Lauren Annen, 3030 Dade Avenue, Orlando, Florida, 32804. Payment at the door (cash or check) for pre-registered attendees will also be accepted if there are seats available.



# Member Times

## Bi-monthly Membership Idea Exchange

August 28, 2004

Vol. 3; Issue 2

**FES and NSPE are giving back for sponsoring a new member in 2005!** This is a great opportunity for FES members to support the Society, meet engineers in the community, and receive a nice reward for their efforts. Listed below are the requirements to participate in both NSPE and FES incentive programs.

### GIVE BACK, GET BACK – NSPE Incentive Program

It's back! NSPE began this successful plan last year and rewarded 41 FES members with free NSPE national dues for the 2004-2005 dues year. Here's how you can earn next year's dues for free. To participate you simply sponsor two or more new members between July 1, 2004 and June 30, 2005. The reward is a saving of \$110! In order to participate, your current membership dues must be paid in full and all new members must pay their membership dues in full. FES is keeping track of all new members sponsored. Look for monthly updates to see how many new members you have sponsored.

### FES Incentive Program

FES has been rewarding members who sponsor new members for over 10 years. The sponsorship year began August 1, 2004 and ends July 31, 2005. In order to participate, your current membership dues must be paid in full, and all new members must pay their membership dues in order for you to receive prizes. Check out the new prizes for 2005!

### Here what's in it for you:

#### Recruit 10 or more new members

Member who sponsors to most over 10 receives a two night stay at the Marco Island Marriott.

#### Recruit 9 new members

Free Annual Conference, Leadership Conference, or Seminar registration of your choice

#### Recruit 8 new members

FREE FES (state level only) membership dues (\$130 value)

#### Recruit 7 new members

Magnifying Paperweight

#### Recruit 6 new members

\$25 FES Bucks

#### Recruit 5 new members

Engineer's Ruler (4" Ruler to scale)

#### Recruit 4 new members

\$15 FES Bucks

#### Recruit 3 new members

FES Mug with coffee (uncooked)

#### Recruit 2 new members

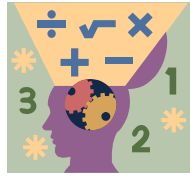
\$10 FES Bucks

#### Recruit 1 new member

FES Picture Frame & Magnet

**Each new member sponsored**, enters you into a drawing for a \$100 gift certificate to Best Buy!

FES applications are available at [www.fleng.org](http://www.fleng.org), or contact Kate Robinson at 850-224-7121 to request additional applications. In order to receive your prizes, don't forget to sign the sponsor portion of the FES applications.



## MATHCOUNTS

After coming from a record year, MathCounts is quickly becoming a major event for the Calusa Chapter. This year FGCU is providing a ballroom for the contestants rather than individual rooms. The event is scheduled for February 12<sup>th</sup> and promises to be better than ever. The only reason this event won't be the best in the state is if we don't get volunteers to help. Please mark your calendars and call **Morgan Dickinson, PE** at (239) 649-4040 to sign up NOW.



## DIRECTORS & COMMITTEE CHAIRS (Contact Us To Volunteer)

<u>How to Contact Us</u>	<u>Phone</u>	<u>FAX</u>	<u>E-Mail</u>
<b>Director - Professional Development</b> Elizabeth Fountain, PE	(239)939-1020	(239)939-7479	<a href="mailto:ElizabethFountain@wilsonmiller.com">ElizabethFountain@wilsonmiller.com</a>
<b>Director - Public Relations</b> Laurie Swanson, PE	(239)649-1509	(239)649-7056	<a href="mailto:las@consult-rwa.com">las@consult-rwa.com</a>
<b>Director - Ways and Means</b> Dan Waters, PE	(239)649-4040	(239)643-5716	<a href="mailto:danielwaters@wilsonmiller.com">danielwaters@wilsonmiller.com</a>
<b>Awards Committee</b> Walt Gilcher, PE	(239)985-1200	(239)985-1258	<a href="mailto:waltgilcher@holemontes.com">waltgilcher@holemontes.com</a>
<b>MathCOUNTS Committee</b> Morgan Dickinson, PE Roxanne Gause, PE (co-chair)	(239)649-4040 (239)768-6600	(239)643-5716 (239)768-0409	<a href="mailto:morgandickinson@wilsonmiller.com">morgandickinson@wilsonmiller.com</a> <a href="mailto:rgause@ardaman.com">rgause@ardaman.com</a>
<b>Scholarship Committee</b> Tommy Perry, PE	(863)983-9188	(863)983-9854	<a href="mailto:tperry@johnsonprewitt.com">tperry@johnsonprewitt.com</a>